

TECHNICAL RIDER 2C SPREEQUARTIER

HERE YOU FIND THE COLLECTION OF TECHNICAL EQUIPMENT OF THE 2C SPREEQUARTIER. FOR EVENTS WITH PROJECTORS, WE RECOMMEND TO REHEARSE YOUR PRESENTATION.

AUDIOTECHNOLOGY

- 1 x OMNITRONIC CMP-2000 Dual CD-Player-MP3 + USB
- 3 x OMNITRONIC HSP-1000 MK2 amplifier (2-canal-amplifier 2 x 500W at 4 Ohm)
- 1 x OMNITRONIC MX-420 Multichannel-Mixer
- 4 x PSSO CSA-218 300W speakers
- 2 x PSSO CSA-228B 600W speakers
- 2 x Wireless microphone Shure PG58 -optional- (UHF Wireless-System with PG58 handheld remote control 9,5“)

LIGHTINGTECHNOLOGY

- 22x Eurolite PS-4 LED TCL 4x3W - DMX controlled
- 2x Eurolite LED FE-900 Hybrid Flowereffect with strobe light
- 4x Futurelight DMH 40 RGBW LED Moving Head
- 5x Expolite TourLED 42 CM MK-II IP65

YOUR CONTACT PERSON

Jens Plechinger | event leader
Tel. +49 30 814 590 735
technik@spreespeicher-events.de
www.spreespeicher-events.de

VIDEOTECHNOLOGY

- 2x NEC PE401H, 4000 ANSI, 1080p HDMI (+ WXGA / VGA)
- 2x Projection screens 3,00 m x 2,20 m
- 1x XORO HRT 7515 HD DVB-T Reciever
- 3x Windows (can be darkened)
- 1x Welcome-Screen Samsung 55 Zoll

ADVISE: We recommend to compile your presentation in a 16:9 format. It's the optimum for the projectors. For the graphics on the Welcome-Screen we recommend a solution with 2.134 x 1.200 pixel at 72 dpi.

POWER STATIONS

- 21x earthed sockets scattered in the location
- 8x earthed sockets outdoor
- 1x Mennekes 5 x 16A high-voltage power station
- 1x Mennekes 5 x 32A high-voltage power station

FEATURES

In the 2C Spreequartier is a central audio mixer that can be controlled via XLR-input. May you want to use your own / an external audio mixer, please connect via XLR-cable with the main audio mixer. The main audio mixer got a digital limiter, that limit the volume to 97 dB.

DO YOU NEED ADDITIONAL EQUIPMENT?





EQUIPMENTCATALOGUE

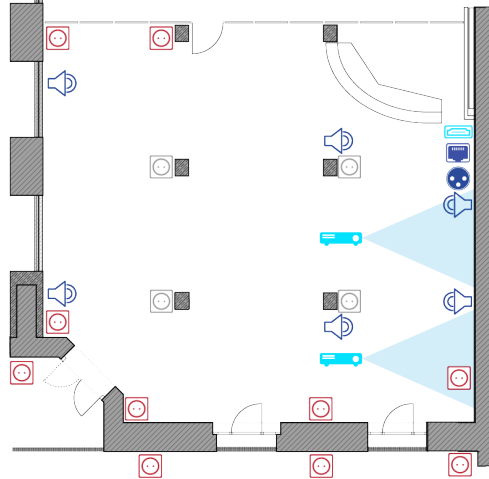
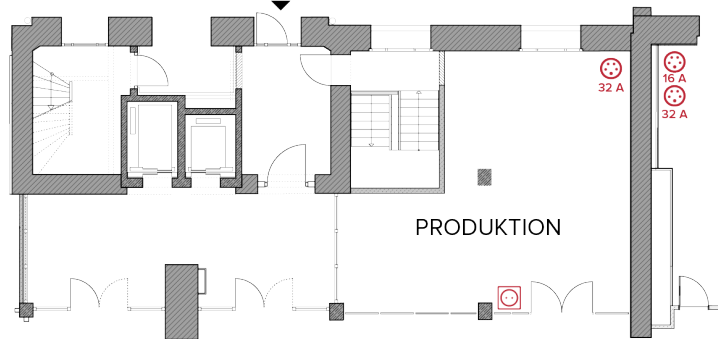
ADVISE:

You can contact us from monday until friday from 10:00 - 18:00. If you plan a technical test, please make an appointment.

TECHNICAL PLAN 2C SPREEQUARTIER






-  high-voltage power station 16 Ampere
-  high-voltage power station 32 Ampere
-  earthed wall socket 230V
-  earthed socket 230V (pillars)
-  Wireless LAN Access Point
-  Ethernet Network Access (2x)
-  XLR-connection (2x)
-  AUX-connection
-  VGA / HDMI connection
-  projector

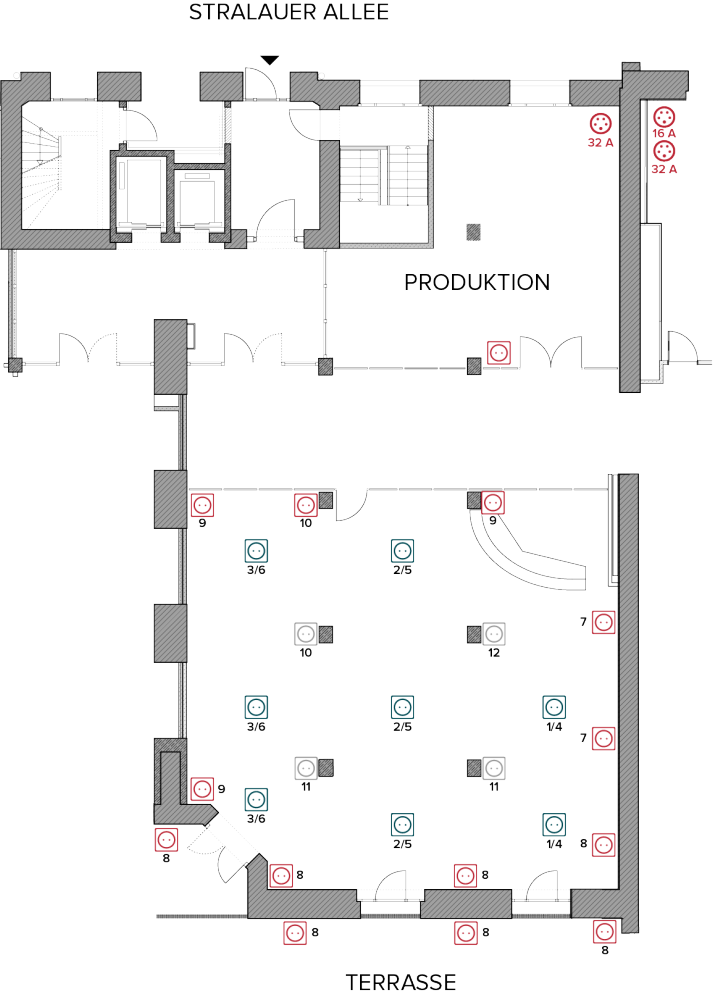
STRALAUER ALLEE



UFERPROMENADE  
2x 16 A

POWERPLAN 2C SPREEQUARTIER

-  high-voltage power station 16 Ampere
-  earthed wall socket 230V
-  earthed socket 230V (floor tank)
-  high-voltage power station 32 Ampere
-  earthed socket 230V (pillars)



UFERPROMENADE 